



WGS PUMPS

威格狮泵业

*LOCAL EXPERT IN
MULTIPHASE SYSTEM*

身边的多相系统专家



Pumping the future,
Flowing the world.

流动世界，泵动未来



The company, formerly known as Zhejiang University Chemical Machinery Factory, is a manufacturer dedicated to the research, development, and manufacturing of screw pumps, with a production history spanning several decades. By continually assimilating and introducing excellent domestic and international technologies, independently developing advanced production processes, and upgrading state-of-the-art production equipment, the company has achieved outstanding levels of performance and quality in its products, earning a solid reputation in the market and the trust of its customers.

Our product offerings primarily include:

- The double volute twin-screw pump series represented by W2N, W2M, and W2H.
- The twin-screw pump series represented by 2G and W2G.
- The twin-screw multiphase systems represented by HWMPs and WMPs.
- The three-screw pump series represented by SN and SM.

In order to better utilize scientific achievements from research institutions for the market and society, enterprises have undertaken a series of reforms. Huangshan City, as the introducing project, has optimized and integrated, continuously injecting fresh energy and consolidating various technical and resource assets from within and outside the industry, infusing the enterprise with vitality.

The company's strategy has always been to take the road of scientific and technological development, in our professional field to provide customized solutions for various industries. WGS pursues the "quality for survival, technology for development, service for market" concept, dedicated to our users to provide excellent products, fast and satisfactory service.

公司前身系浙江大学化工机械厂，是一个专注从事螺杆泵的研发、制造的厂家，已有数十年的生产历史。通过不断吸收和引进国内外的优良技术，自主开发先进的生产工艺，更新一线的生产设备，企业产品的性能和质量已达到卓越水平，赢得了市场的口碑和客户的信赖。

产品主要有：

- 以 W2N、W2M 和 W2H 为代表的双吸双螺杆泵系列；
- 以 2G 和 W2G 为代表的双螺杆泵系列；
- 以 HWMPs 和 WMPs 为代表的双螺杆多相系统；
- 以 SN、SM 为代表的三螺杆泵等系列；

为了将科研院校的科研成果更好地应用于市场并服务社会，企业进行了一系列的改革。黄山市作为引进项目进行了优化和整合，不断注入新的动力，整合了行业内的各种技术和资源，使企业充满了活力。

公司的战略始终是走科技发展的道路，在我们的专业领域上为各行业提供定制化的解决方案。公司奉行“质量求生存，科技求发展，服务求市场”的理念，竭诚为我们的用户提供优良的产品、快捷满意的服务。

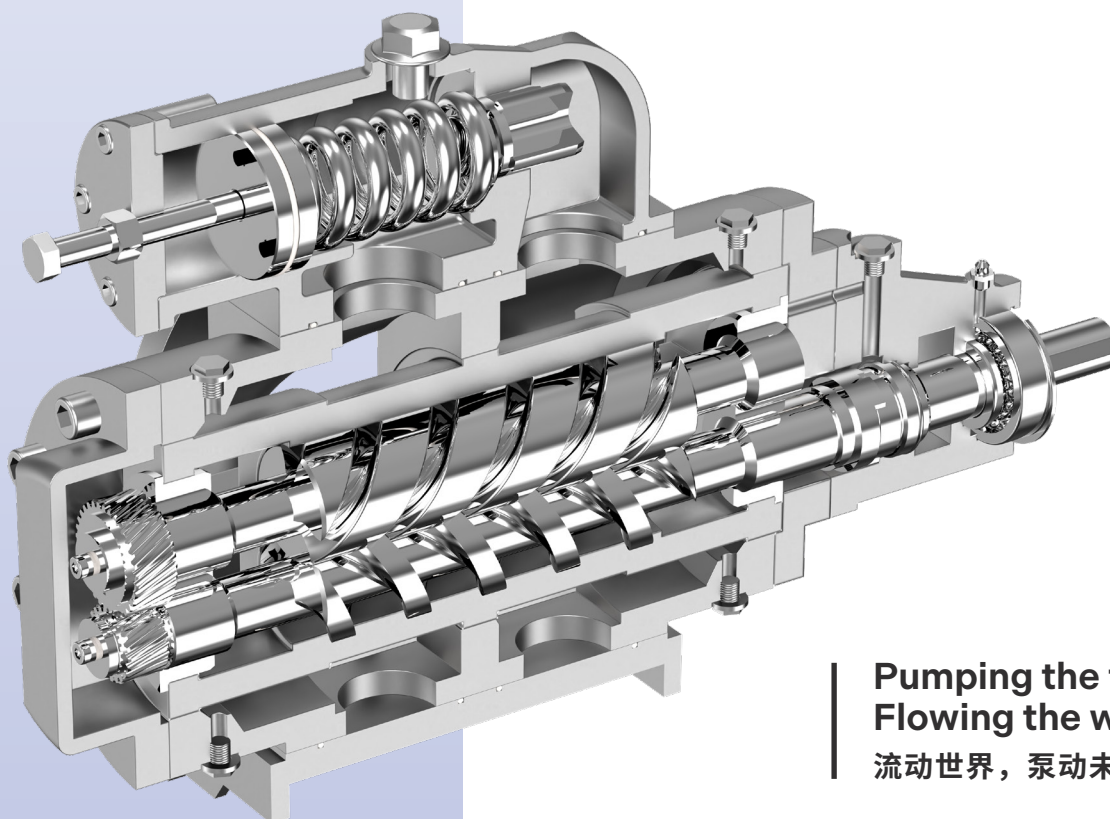
4 PHILOSOPHY AND ABILITY
理念和能力

6 INDUSTRIES
行业应用

7 PRODUCTS INFO
产品信息

12 WGS PUMPING SYSTEMS
威格狮泵系统

15 6 REASONS TO RELY ON WGS
选择威格狮的六大理由



Pumping the future,
Flowing the world.
流动世界，泵动未来

PHILOSOPHY AND ABILITY 理念和能力



Efficient 高效

Rapid responses, advanced production methods, and tight delivery schedules.

快速的应答，先进的生产手段，紧凑的交货周期。

Experienced 资深

Over 30 years of manufacturing history, top-notch technical support, and a profound foundation in mechanical processing.

30 余年的制造历史，顶尖的技术支持，深厚的机械加工底蕴。

Meticulous 细致

Complete every stage from technical scheme to final delivery according to customer requirements.

根据客户的要求完成选型到出厂的每一个重要环节。

Professional 专业

Provide customized technical solutions and comprehensive post-sales support based on the medium and operating conditions.

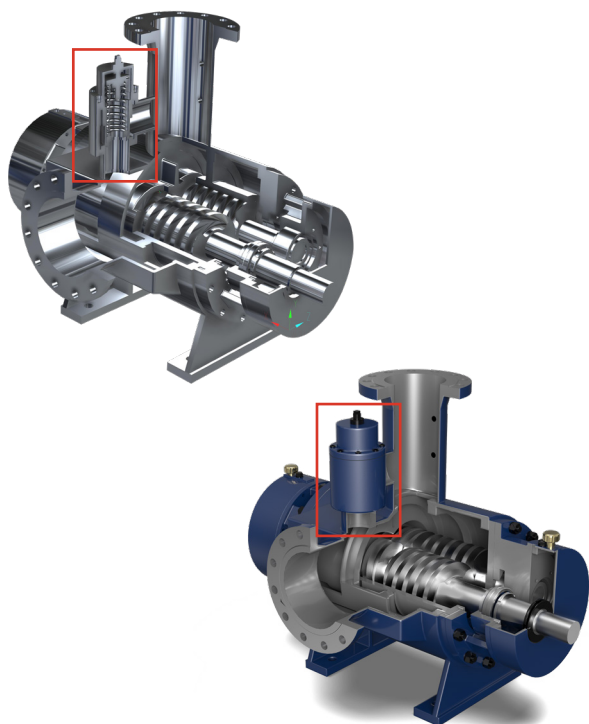
根据介质和工况提供定制化的技术方案和完善的售后支持。

WGS'S TECHNOLOGY IS THE CORE OF EVERY MULTIPHASE PUMP SYSTEM.

每个多相泵系统的核心是威格狮技术

Full Recirculation Pressure Limit Valve

全回流限压阀



The full recirculation pressure limit valve can protect the pump system from being damaged due to excessive pressure. Once the pressure of the medium in the system piping or equipment exceeds the set value, it will automatically release the pressure and achieve full recirculation, thereby ensuring safety protection.

The pressure limit valve is a patented design, which ensures that the device does not cause additional power consumption to the motor during the full recirculation process, thereby guaranteeing the motor's lifespan and reducing motor losses.

全回流限压阀可以保护泵系统因压力过高而被破坏，一旦系统管路或装置中的介质压力超过设定值，会自动释放压力，并且能达到全回流，从而实现安全保护的目的。

限压阀为专利设计，可保证装置在全回流过程中不会使电机引起附加的额外功率，保证了电机寿命，减小电机损耗。



1. The adoption of integral screw shafts increases the equivalent diameter of the critical cross-section by nearly 50% and enhances strength by approximately 2.5 times compared to the previous split-type screw rotor shafts.
2. Integral screw shafts eliminate the need for keyways, ensuring that there is no reduction in shaft strength due to the absence of keyways. Moreover, it eliminates stress concentrations caused by keyway machining.
3. The unique profile design significantly increases the maximum pressure within the single-stage screw rotor sealing chamber. As a result, with the same outlet pressure, the number of sealing chambers on the screw rotor is reduced by 30% compared to conventional screw designs. This reduction in sealing chambers leads to a corresponding decrease in rotor length, shortening the span between support points on the screw rotor shaft by 25%. The rotor shaft experiences an approximately 80% reduction in deflection under the same load.
4. The design aims for zero theoretical dynamic balance, substantially reducing additional loads on the screw rotor shaft (almost close to zero). This reduction leads to a decrease in horizontal load on the rotor shaft of approximately 30% to 60%.
5. The screw geometry design is based on rotor dynamics research, resulting in the following improvements:
 - a. The loads on the screw rotor shaft transition from externally symmetric cyclic stress to nearly symmetric cyclic stress, with $\sigma_{\max} = -\sigma_{\min}$.
 - b. The average stress, σ_m , approaches zero.
 - c. The absolute value of stress amplitude, σ_a , decreases by approximately 30% to 60%.

All of the above 5 points will greatly increase the fatigue strength of the screw rotor shaft, thus avoiding fatigue failure of the screw rotor shaft.

1. 采用整体式螺杆轴 - 原分体式螺杆转子轴危险断面上的当量直径增加近 50%，因而强度增加约 2.5 倍。
2. 整体式螺杆取消了分体式螺杆轴必须的键槽，没有了键槽对轴强度的削弱，也没有了键槽加工引起的应力集中。
3. 螺杆转子型面采用了具有自主知识产权的型线专利。单级螺杆转子密封腔极限压力大大提高，因而达到同样的出口压力，螺杆转子上的密封腔数比目前通常的转子型线的螺杆转子密封腔减少 30%，螺旋转子部分长度也相应减少，因而螺杆转子轴支撑点的跨距缩短 25%。转子轴在同样的载荷下挠度减少约 80%。
4. 采用理论上动平衡量为零的转子设计，大大降低了螺杆转子轴上的附加载荷（几乎接近于零）。从而使转子轴上的水平载荷降低接近 30% 60%（不同工况条件下降低的幅度不一样）。
5. 根据转子动力学的研究成果进行的螺杆几何设计，将使得：
 - a. 螺杆转子轴上的载荷由外对称循环应力变为近似对称循环应力。 $\sigma_{\max} = -\sigma_{\min}$ 。
 - b. 平均应力 σ_m 接近为零。
 - c. 应力幅 σ_a 绝对值减少近 30% 60%。

上述 5 点都将极大的提升螺杆转子轴的疲劳强度，从而避免螺杆转子轴的疲劳失效。

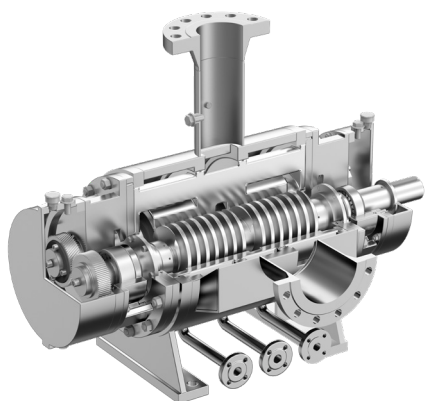
INDUSTRIES

行业应用

WGS offers a wide range of customized products across various industries, ranging from individual components to complete smart systems, providing tailored solutions that best match the specific needs.

威格狮在不同的行业中提供各种定制化产品，从零配件到完整的智能系统根据实际需求给予最为相符的定制化解决方案。

	W2N/M/H	W2G	2Ga/b	ICE BUMP	WSN/M
					
 Oil & Gas 石油天然气	✓			✓	
 Steel Production 冶金工业	✓	✓	✓	✓	✓
 Ship Maritime 船舶海事	✓			✓	✓
 Power & Energy 电力工程	✓			✓	✓
 Chemical 石油化工	✓		✓	✓	✓
 Pulp & Paper 造纸	✓		✓	✓	✓
 Textiles 纺织	✓			✓	✓
 Paints 涂料	✓		✓	✓	
 Medicine 药浆	✓		✓	✓	



Advantages 优点

- Integral Rotor Design
- No Metal Contact Between Rotors
- No Power Transmission Between Rotors
- Low Maintenance Costs
- Special Profile Design
- Optimal NPHSr
- No Axial Forces
- Excellent Self-priming
- Full Recirculation Pressure-Limiting Valve Possible
- Multiphase Pumping Structure Possible
- 一体式转子
- 转子间无金属接触
- 转子间无动力传递
- 低维护成本
- 特殊的型线设计
- 最优的 NPSHr
- 无轴向力
- 自吸能力出色
- 可选用全回流限压阀
- 可选用混输结构

Medium 介质

Providing solutions for the transportation of various medium.

提供各种介质输送的解决方案

Application 应用

This product series is designed to address different fluid environments with low, medium and high pressure models. They are widely used in the high-flow, long-distance transportation of oilfield gathering systems, effectively handling high-water, high GVF% content and high-viscosity medium. In some cases, they can serve as alternatives to certain pipeline pigging functions, reducing operational pressure.

本系列产品为应对不同的流体环境设计了低压、中压、高压的对应型号，广泛应用于油田集输系统的大流量长距离输送，可以有效应对高含水、高含气、高粘介质，在某些方面可替代部分管道扫线功能，减少作业压力。

Performance Data 性能数据

	W2N	W2M	W2H
Capacity 容量	max 5,000 m ³ /h	max 3,000 m ³ /h	max 1,500 m ³ /h
Differential Pressure 压差	max 16bar	max 40bar	max 120bar
Viscosity 粘度	max 100,000mm ² /s	max 100,000mm ² /s	max 100,000mm ² /s
Pumping Temperature 温度	max 380°C	max 380°C	max 380°C

Partial Service 部分业绩

A Materials Company, W2M460-118W, 500m³/h, 0.5Mpa, 230°C, transfer for acrylic anhydride

An Oilfield, W2M400, 135m³/h, 5.0Mpa, 70°C, GVF 70%, transfer for crude oils (oil, water, gas)

An Oilfield, W2H500, 1450m³/h, 1.6Mpa, 80°C, transfer for purifying crude oil

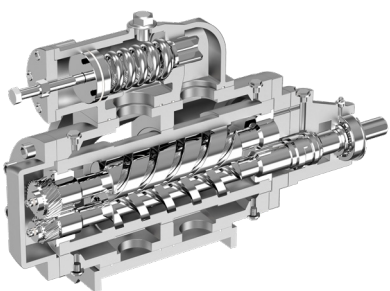
An Eco-Tech Company, W2M420-100W, 400m³/h, 1.0Mpa, 100°C, transfer for oil slurry

A Petrochemical Company, W2N340-118W, 300m³/h, 0.8Mpa, 150°C, transfer for Industrial base oils

A Petrochemical Warehousing Company, W2N340-118W, 400m³/h, 0.6Mpa, 150°C, transfer for used oil

Physical Picture 实物照片



**Advantages 优点**

- Strong Versatility
- Compact Structure
- High Efficiency
- Long Service Life
- Smooth Operation
- Low Noise And Vibration
- Ease Of Maintenance
- 通用性强
- 结构紧凑
- 高效率
- 使用寿命长
- 运行平稳
- 低噪音和振动
- 易于维修

Medium 介质

Crude oil, heavy oil, oil sludge,
polyester resin

原油、重油、油泥、聚
酯树脂

Application 应用

2Ga/b series WGS screw pump is twin-screw, self-priming, positive displacement pump designed for medium of different viscosities. With external bearings, they can transport non-lubricating medium and endure higher temperatures.

威格狮 2Ga/b 系列是双螺杆、自吸式容积泵，适用各种粘度的润滑介质。采用外置轴承结构时能输送非润滑性介质，承受更高温度。

Performance Data 性能数据

Capacity 容量	max 270m ³ /h	m ³	0	500	1000	1500	2000	2500	3000	3500	4000	4500	5000
Differential Pressure 压差	max 16bar	bar	0	20	40	60	80	100	120	140			
Viscosity 粘度	max 100,000mm ² /s	mm ² /s	0	10,000	20,000	30,000	40,000	50,000	60,000	70,000	80,000	90,000	100,000
Pumping Temperature 温度	max 150°C	°C	0	50	100	150	200	250	300	350	400		

Partial Service 部分业绩

A Jiangsu Asphalt Plant, 2GbH96, 50m³/h, 1.0Mpa, 50°C, transfer for bitumen

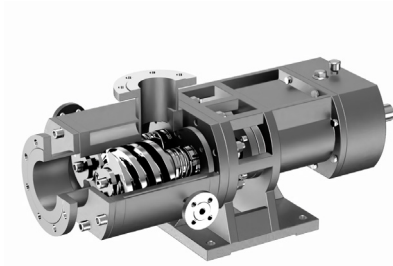
A Shanxi Petrochemical Company, 2GbHb70, 30m³/h, 1.0 Mpa, 100°C, transfer for oil slurry

A Zhoushan Manufacturing Company, 2GbH62, 10m³/h, 1.0Mpa, 40°C, transfer for emulsion

A Zhejiang Shipment Company, 2GbNb106, 70m³/h, 1.5Mpa, 60°C, transfer for used oil

A Shanxi Coal Chemical Company, 2GbRN116, 110m³/h, 1.5Mpa, 100°C, transfer for coal tar

Physical Picture 实物照片



Advantages 优点

- Long Service Life
- Low Noise And Vibration
- High Efficiency
- Smooth Operation
- Easy Dismounting
- Easy Maintenance, Low Cost
- Short Flow Path
- Pumped Media Can Contain Particles
- 使用寿命长
- 噪音震动小
- 效率高
- 运转平稳
- 易于拆卸
- 维修方便，成本低
- 流道短
- 泵送介质可含微粒

Medium 介质

Slurry, adhesive, grease, dairy products

浆料、胶液、脂类、乳制品

Application 应用

W2G series WGS screw pump is twin-screw, single-volute, short-flow-path, self-priming positive displacement pump. Flow is regulated with low speed and frequency control, while the short flow path prevents material coalescence and clogging.

威格狮 W2G 系列是双螺杆、单轴流、短流道的自吸式容积泵。采用低转速和变频调速控制泵流量，短流道的设计可避免物料凝聚和堵塞。

Performance Data 性能数据

Capacity 容量	max 180 m ³ /h	m ³ /h	0	500	1000	1500	2000	2500	3000	3500	4000	4500	5000
Differential Pressure 压差	max 10bar	bar	0	20	40	60	80	100	120	140			
Viscosity 粘度	max 100,000mm ² /s	mm ² /s	0	10,000	20,000	30,000	40,000	50,000	60,000	70,000	80,000	90,000	100,000
Pumping Temperature 温度	max 250°C	°C	0	50	100	150	200	250	300	350	400		

Partial Service 部分业绩

A Turkey Chemical Company, W2G140-36W, 10m³/h, 1.0Mpa, 280°C, transfer for PET poltmer

A ShanXi Chemistry Company, W2GRT208-40W, 50m³/h, 1.5Mpa, 420°C, transfer for coal tar

An Inner Mongolia Coal Chemical Company, W2GRT208-40W, 50m³/h, 1.5Mpa, 420°C, transfer for coal tar

A Lanzhou Heavy Equipment Company, W2Gs208-72W, 200m³/h, 1.8Mpa, 200°C, transfer for bitumen

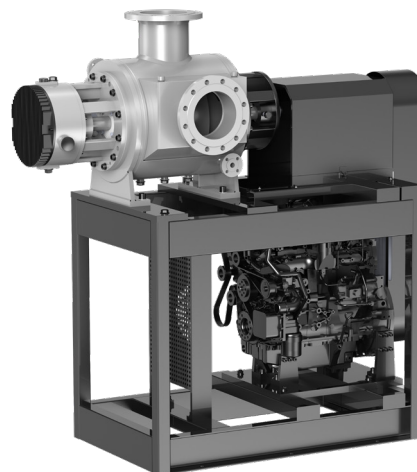
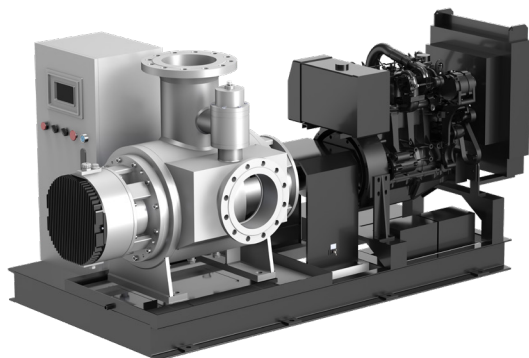
A Hunan Petrochemical Company, W2Gs182-48W, 165m³/h, 1.0Mpa, 280°C, transfer for used oil

Physical Picture 实物照片



Brief introduction 简介

Developed by WGS, this mobile pump is versatile for harsh conditions and areas with limited power supply. It can also serve as an emergency pump, comprising a WGS twin-screw pump, internal combustion engine, and control module. The internal combustion engine, controlled by programmed instructions, ensures automatic startup during power failures, maintaining continuous system operation.



本系列是 WGS 自主研发的移动便携式泵，可灵活应用于各种恶劣工况以及供电不便的区域，还可作为紧急事故泵使用。该装置由 WGS 双螺杆泵、内燃机、控制模块三部分组成。驱动装置为内燃机，通过控制模块编写程序指令，使该装置在原系统意外断电或其他事故时，自动开机运转，保障了系统功能的持续正常运行。

Optional Pumps 可选方案

W2G, 2Ga, 2Gb, W2N, W2M, W2H

Driver: Internal combustion engine

Control module: Customized

Structure: Upper&lower or left&right

W2G, 2Ga, 2Gb, W2N, W2M, W2H

驱动部分：内燃机（柴油、天然气等）

控制模块：由客户指定

结构：上下结构或左右结构

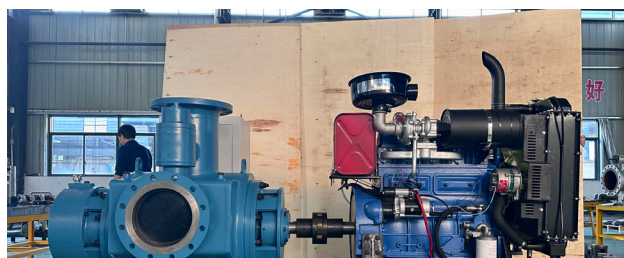
Performance Data 性能数据

Capacity 容量	max 5000m ³ /h	m ³ /h	0	500	1000	1500	2000	2500	3000	3500	4000	4500	5000
Differential Pressure 压差	max 16bar	bar	0	20	40	60	80	100	120	140			
Viscosity 粘度	max 100,000mm ² /s	mm ² /s	0	10,000	20,000	30,000	40,000	50,000	60,000	70,000	80,000	90,000	100,000
Pumping Temperature 温度	max 250°C	°C	0	50	100	150	200	250	300	350	400		

*In the case of W2N * 以 W2N 为例

Physical Picture 实物照片

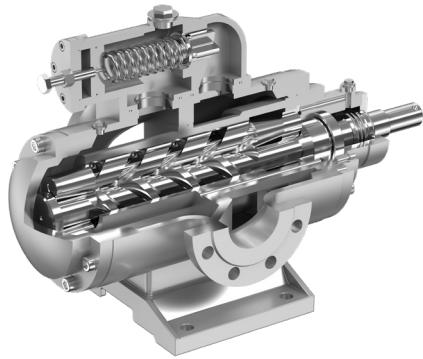
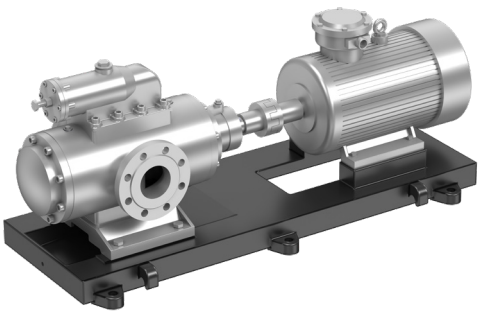
A Xian Energy Company, ICE W2ME420-67, 1.0Mpa, 240m³/h, 100mm²/s, 80°C, transfer for crude oil, diesel engine power 200KW



A Shanxi Power Engineering Company, ICE W2ME420-67, 1.0Mpa, 240m³/h, 100mm²/s, 80°C, transfer for crude oil, diesel engine power 200KW

Advantages 优点

- Versatile Installation Options
- Strong Self-Priming Capability
- Long Service Life
- High Efficiency
- Lowest Operating Costs
- Lowest Maintenance Costs
- Easy Installation
- Smooth Operation
- Low Noise And Vibration
- 安装方式多样
- 具有强自吸能力
- 使用寿命长
- 高效率
- 最低的运行成本
- 最低的维护成本
- 易于安装
- 运行平稳
- 低噪音和振动



Medium 介质

Crude oil, Hydraulic oil, Lubricating oil, Asphalt, Heavy oil, Residue oil, Light diesel, Heavy diesel, Wax-containing thin oil, Rubber solution, Emulsion

原油、液压油、润滑油、沥青、重油、渣油、轻柴油、重柴油、含蜡稀油橡胶液、乳化液

Application 应用

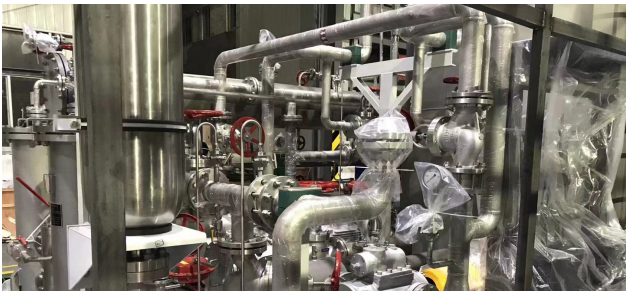
WSN/WSM series WGS screw pump are triple-screw, single-volute, self-priming, positive displacement pump designed for medium of different viscosities, it can supply heating or cooling by customer's demand.

威格狮 WSN/M 系列是三螺杆、单轴流、自吸式容积泵，适用各种润滑性和粘性介质，可根据要求提供加热或冷却。

Performance Data 性能数据

Capacity 容量	max 300m ³ /h	m ³	0	500	1000	1500	2000	2500	3000	3500	4000	4500	5000
Differential Pressure 压差	max 60bar	bar	0	20	40	60	80	100	120	140			
Viscosity 粘度	max 760mm ² /s	mm ² /s	0	10,000	20,000	30,000	40,000	50,000	60,000	70,000	80,000	90,000	100,000
Pumping Temperature 温度	max 120°C	°C	0	50	100	150	200	250	300	350	400		

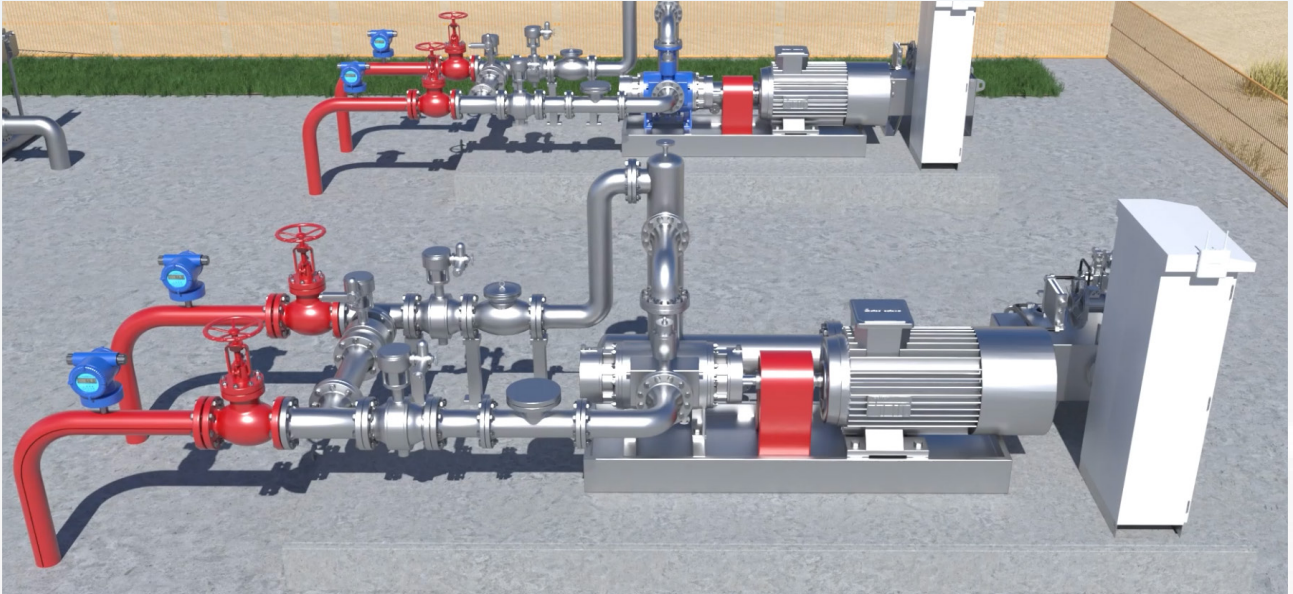
Physical Picture 实物照片



A Petrochemical Company in Shanxi, WSM280-43, 35m³/h, 1.0Mpa, 120°C, transfer for diesel oil



A Chemical Factory in Shandong, WSMH660-40, 10m³/h, 4.0Mpa, 40°C, transfer for coal tar



Overview

概述

The WGS multiphase system of Wei Ge lion Pumps consists of various components, including multiphase pump unit, explosion-proof variable frequency motor, baseplate, inverters, external lubrication system, explosion-proof water chiller, buffer tanks, as well as various instruments and automatic controllers, etc. These components are assembled to provide customized solutions, ranging from single wellhead operations in oilfields to long-distance crude oil transportation, tailored to meet the specific needs of each customer, reducing costs and enhancing efficiency.

WGS's pump system can handle various combinations of oil, water, and gas under any operating conditions. Customers can also choose to use buffer tanks to circulate liquid medium back to the pump suction chamber, enabling the system to achieve dry running performance for extremely long time (GVF $\leq 100\%$), as per customer requirements.

WGS Pumps has successfully installed and operated over thirty intelligent oil and gas multiphase transportation systems at wellheads in collaboration with Chinese partners. This has led to significant achievements in increasing oilfield production, efficiency, and energy savings through the intelligent conveyance of oil and gas at the wellhead.

威格狮泵业的双螺杆多相系统由：多相泵、防爆变频电机、底座、变频器、外部润滑系统、防爆水冷机、缓冲罐以及各种仪表和自动控制器等集合而成，根据客户的实际需求提供从油田单井口到原油长输等一系列定制化的解决方案，为每一位客人降低成本，提高效率。

威格狮的泵撬系统能够处理油、水、气的任意工况组合，还可以根据客户要求选择缓冲罐进行液体介质回流到泵入口腔的循环方式，让此系统达到极长时间的干运转性能（GVF $\leq 100\%$ ）。

威格狮泵业已经为中国的合作方成功组建并营运三十多套井口智能化油气混输系统，实现了油气井口智能化输送，在油田增产、增效、节能方面取得显著成果。

Performance Data 性能数据

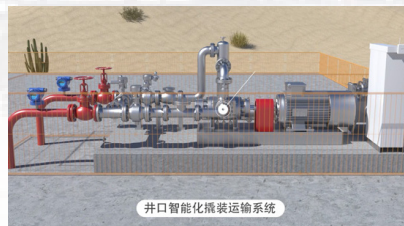
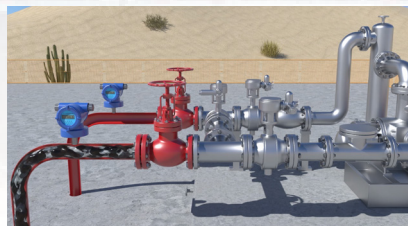
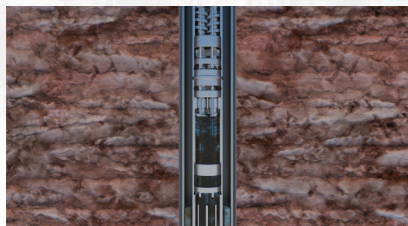
Capacity 容量	max 5,000m ³ /h	m ³ /h	0	500	1000	1500	2000	2500	3000	3500	4000	4500	5000
Differential Pressure 压差	max 100bar	bar	0	20	40	60	80	100	120	140			
Viscosity 粘度	max 1000,000mm ² /s	mm ² /s	0	10,000	20,000	30,000	40,000	50,000	60,000	70,000	80,000	90,000	100,000
Pumping Temperature 温度	max 250°C	°C	0	50	100	150	200	250	300	350	400		

The core of the WGS Multi-Phase Boosting Pump System is a twin-screw positive displacement pump capable of handling all fluid mixtures, even pure gases at the pump inlet.

WGS multiphase system also can prevent emulsification of the mixture. Inlet pressure at the wellhead is maintained constant by adjusting the speed. As a part of the WGS Multi-Phase Boosting Pump System, the control system can operate the system at a constant inlet pressure by adjusting the speed.

The twin-screw pump which WGS multiphase system used operates on the volumetric principle and offers the following key advantages:

1. Insensitivity to phase changes
2. Capability to handle various combinations of oil, water, and gas conditions
3. Easy adaptation to fluctuating flow rate requirements through speed control
4. Ability to transfer medium with sand content
5. Special coatings developed for heavy-sand oilfield application



威格狮多相增压泵系统的核心是双螺杆式容积泵，其拥有处理所有流体混合物的功能，甚至泵入口处是纯气体。

威格狮多相系统还能够防止混合物乳化。通过调节转速来保持入口压力、出口压力的恒定。作为威格狮多相增压泵系统的一个组成部分，控制系统能够通过速度调节以恒定的入口压力运行系统。

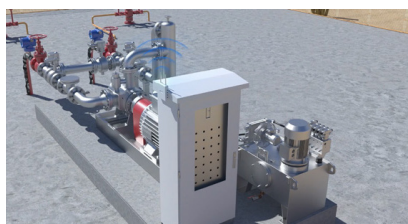
威格狮多相系统应用的双螺杆泵采用容积式原理，具有以下额外的优势：

1. 对相位变化不敏感
2. 能够处理油、水和气的任意工况组合
3. 通过速度控制，可轻松适应不断变化的流量要求
4. 可输送含砂介质
5. 为高含砂油田开发的特殊涂层

Scope Of Supply 供应范围

- WGS Multiphase Pump
- Suitable Sealing Options
- Skid Baseplate
- Driver
- Customized Medium Pipelines
- Variable Speed Drives
- Customized Lubricating System
- On-Device Instrumentation
- Customized Temperature Control Solution
- On-Device Valves
- Flexible Non-Sparking Coupling Guard
- PLC Automatic Control Cabinet
- Remote Central Control System
- Integrated Packaging Solutions For Power And Control Skids

- 威格狮混输泵
- 适配的密封方案
- 撬装底座
- 驱动装置
- 定制化介质管道
- 变频器
- 定制化润滑系统
- 设备仪表
- 定制化温控方案
- 设备阀门
- 无火花防护罩联轴器
- PLC 自动控制柜
- 远程中控系统
- 动力和控制撬块的集成包装方案



Partial Application Cases

部分应用案例



ShengLi Oilfield, CHINA

- Model: HWMP100
- GVF: 85%
- Medium: Gas, Oil, Water
- Condition: Sand Containing
- Delivery Time: 2019.05



ShengLi Oilfield, CHINA

- Model: W2H500
- GVF: 40%
- Medium: Gas, Oil, Water
- Condition: Sand Containing
- Delivery Time: 2020.01



TaHe Oilfield, 12-6 Station, CHINA

- Model: HWMP200
- GVF: 94.7%
- Medium: Gas, Oil, Water
- Condition: High gas-oil ratio
- Delivery Time: 2022.03

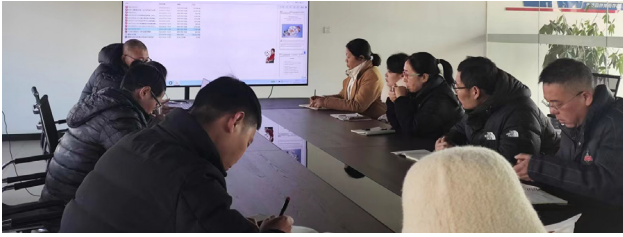


TaHe Oilfield, TH10321 Station, CHINA

- Model: HWMP200
- GVF: 95%
- Medium: GAS, OIL, WATER, H₂S
- Condition: High gas-oil ratio
- Delivery Time: 2023.01

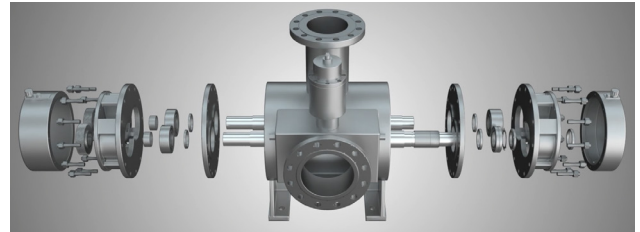
Others 其他

Type 型号	User 使用方	Medium 输送介质	GVF% 含气量	Delivery Time 供货时间
W2M420	Liaohe Oilfield, Specialized Area 辽河油田, 特油区块	Oil, Gas, Water	75	2023.03
W2M288	ShengLi Oilfield, ChengBei Station 胜利油田, 陈北	Oil, Gas, Water	70	2021.06
W2M288	TuHa Oilfield 吐哈油田	Oil, Gas, Water	80	2023.06
W2M340	ShengLi Oilfield, Isolated Island Area 胜利油田, 孤岛区块	Oil, Gas, Water	70	2021.11
W2M530	ShengLi Oilfield, Crude Oil Depot 胜利油田, 原油库	Oil, Gas, Water	0	2021.02
W2H500	TaHe Oilfield, 4-Union Station 塔河油田, 四联合站	Oil, Gas, Water	0	2020.03



Swift Response Time, Efficient Clarification Processes
迅速的应答速度，高效的澄清流程

Prompt Solutions, Robust Technical Support
快速的解决方案、强大的技术支持



Outstanding Production Efficiency, Shorter Delivery Cycles
卓越的生产水平，较短的交货周期

Stringent Quality Control
严格的品质把控



Comprehensive Factory Testing
全面的出厂测试

Reliable After-Sales Support
可靠的售后支持



WGS Takes Every Order From Our Customers Seriously:

From receiving the questionnaire for product selection to the dispatch of the product from the factory, and through every step of after-sales service, WGS maintains close communication with the customer throughout the entire process. This ensures that customers are informed about the progress of their orders, receive timely updates, and can swiftly clarify any issues through effective communication.

威格狮认真对待客户的每一个订单：

从接收问卷开始选型，到产品出厂发货，到售后服务的每一个环节，威格狮全程与客户保持密切的联系——让客户了解订单的推进情况，时刻接收最新进度，迅速沟通各种问题。



MOSCOW, RUSSIA

莫斯科办事处

KAZAKHSTAN

哈萨克斯坦办事处

ISFAHAN, IRAN

伊斯法罕办事处

DONGYING, CHINA

山东东营办事处

HETIAN, CHINA

新疆和田办事处

HEADQUARTER
HUANGSHAN, CHINA

中国黄山总部

HuangShan Wei Ge Lion Pumps CO.,LTD

Address:

No.99 Baichuan Road, Hi-Tech Industrial Development Zone,
Huangshan City, Anhui Province, China

Phone:

4008977738

General Manager's Office Email address:

pan@vigorous-pumps.com

International Business Email Address:

ouyang@vigorous-pumps.com

Domestic Business Email address:

ling@vigorous-pumps.com

After-sales Service Email address:

panwei@vigorous-pumps.com

Official Website:

www.vigorous-pumps.com

黄山市威格狮泵业有限公司

地址:

安徽省黄山市高新技术产业开发区
百川路 99 号

电话:

4008977738

总经办邮箱:

pan@vigorous-pumps.com

国际业务邮箱:

ouyang@vigorous-pumps.com

国内业务邮箱:

ling@vigorous-pumps.com

售后服务邮箱:

panwei@vigorous-pumps.com

官方网站:

www.vigorous-pumps.com